

Customer Learning Catalog
Hitachi Data Systems Academy

The Learning Catalog

> Welcome

This learning catalog is a collection of learning path illustrations to guide you in identifying courses suitable for fulfilling your learning requirements. The collection represents all offerings aligned with the Global HDS Academy strategy for training as set in collaboration with all HDS business functions.

All training offerings, and their associated Certification credentials where available, are structured in role based order to enable you to associate with, and identify, the specific training road-map that addresses your required skills. In addition, they are grouped to best fit our product and solution offerings for your further ease of reference.

All sections of the catalog are hyperlinked and contain deeplinks to the Learning Center to access further information, such as course descriptions and global schedules.

For any questions and assistance in helping you map your needs to available offerings please do not hesitate to contact your local Academy training manager.

With best wishes
Your HDS Academy team





The Learning Catalog

> About

We trust that you will find this a valuable tool to guide you through your HDS learning roadmap. All learning offerings are grouped in sections which are hyperlinked to facilitate your browsing and training selections. By selecting the main tabs further offerings organized in a menu format will appear, within which all the relevant Learning Assets will be displayed.

Click on any Main-Menu Tab to view Sub-Menu topics →
Click on any Sub-Menu to access the relevant Learning Assets →

Home Products Solutions Certification Add. Info

Foundation Data Protection File & Content Compute Platform Networking

The last section of the document, entitled "Additional Info", contains very useful reference material including how to access the Hitachi Data Systems Learning Center (our Learning Management System), how to identify dates and register for courses, as well as access the course descriptions and HDS Academy contact details.

With best wishes and looking forward to being of assistance,
Your HDS Academy team



Home



Products



Solutions



Certification



Add. Info

Foundation

Storage Systems

Storage Management

Data Protection

File & Content

Compute Platform

Infrastructure

All Technical Roles

> Foundation Level Training

CCI0110 - Hitachi Data Systems Storage Concepts 2 day ILT 2 Training Units	TCI2004 - Transitioning to Hitachi Storage Systems 2 day ILT 2 Training Units	TCI2211 - Hitachi Data Systems Network Fundamentals 5 day ILT 5 Training Units
CCI1986 - Understanding Mainframe Environments 5 day ILT 5 Training Units	THI2264 - Hitachi Data Systems Storage Foundations 5 day ILT 5 Training Units	<div style="border: 1px solid black; padding: 2px;"> <div style="display: flex; align-items: center;"> <div style="writing-mode: vertical-rl; transform: rotate(180deg); font-weight: bold; padding: 2px;">AMERICAS ONLY</div> <div style="padding: 2px;"> THI0430- Hitachi Data Systems Storage Boot Camp 10 day ILT 10 Training Units </div> </div> <div style="padding: 2px;"> CCI1180- SAN Boot Camp 5 day ILT 5 Training Units </div> </div>



Home



Products



Solutions



Certification



Add. Info

> Hitachi Storage Systems

AMERICA ONLY	THI0430- Hitachi Data Systems Storage Boot Camp 10 day ILT		10 Training Units
	EMEA / APAC	TSI1949 - Basic Provisioning for Hitachi Unified Storage 3 day ILT	3 Training Units
TSI1950 - Advanced Provisioning for Hitachi Unified Storage 2 day ILT		2 Training Units	5 Training Units
CCI2288 - Hitachi Unified Storage VM Fundamentals 3 day ILT		3 Training Units	
TSI2565 - Managing Hitachi Storage with Hitachi Command Suite v8.x 5 day ILT		5 Training Units	
TSI2980 - Managing In-System and Remote Replications 5 day ILT		5 Training Units	
CSI0147 - Hitachi Enterprise Storage In-Systems & TrueCopy Remote Replication 5 day ILT		5 Training Units	
TSI2563 - Implementing Virtualization and Data Mobility Solution v8.x 5 day ILT		5 Training Units	
TSI2728 - Managing Global-Active Device on Hitachi Virtual Storage Platform G Series 3 day ILT		3 Training Units	

> Hitachi Flash Storage

TSC2765 – Managing Hitachi Flash Storage A200 Series 3 hour WBT	Free of Charge
--	----------------



Home



Products



Solutions



Certification



Add. Info

Foundation

Storage Systems

Storage Management

Data Protection

File & Content

Compute Platform

Infrastructure

> Hitachi Command Suite 1/2

Hitachi Command Suite 2/2

Virtualization

Installation and Support Implementation and Integration Architecting

> Configuration and Provisioning

TSI2562 - Hitachi Command Suite v8.x Installation and Configuration 5 day ILT 5 Training Units	TSI2565 - Managing Hitachi Storage with Hitachi Command Suite v8.x 5 day ILT 5 Training Units	TSI2597 - Architecting Storage Performance with Hitachi Storage Using Command Suite v8.x 5 day ILT 5 Training Units
--	---	---

Administration

> Configuration and Provisioning

TSI2565 - Managing Hitachi Storage with Hitachi Command Suite v8.x 5 day ILT 5 Training Units	TCV2837 - Getting Started with Hitachi Storage Advisor for Block and File 15 minute video suite Free of charge	TSV2836 - Configuring the Hitachi Storage Advisor Environment with the Virtual Appliance Manager Tool 3.5 minute video Free of charge
---	--	---

TSI2790 - Hitachi Storage Administration Software Technology Overview 3 day ILT 3 Training Units	TSI2929 - Managing Hitachi Storage Advisor 2 day ILT 2 Training Units
--	---

Installation and Support Implementation and Integration Administration Architecting

> Virtualization and Data Mobility

TSI2562 - Hitachi Command Suite v8.x Installation and Configuration 5 day ILT 5 Training Units	TSI2563 - Implementing Virtualization and Data Mobility Solution v8.x 5 day ILT 5 Training Units	TSI2597 - Architecting Storage Performance with Hitachi Storage v8.x 5 day ILT 5 Training Units
	TSI2728 - Managing Global-Active Device on Hitachi Virtual Storage Platform G Series 3 day ILT 3 Training Units	



Foundation

Storage Systems

Storage Management

Data Protection

File & Content

Compute Platform

Infrastructure

Hitachi Command Suite 1/2

> Hitachi Command Suite 2/2

Virtualization

Installation and Support

Implementation and Integration

Administration

Architecting

> Performance and Analytics

TSI2562 - Installing and Configuring Hitachi Command Suite v8.x

5 day ILT

5 Training Units

TSI2596 - Managing Storage Performance with Hitachi Tuning Manager v8.x

4 day ILT

4 Training Units

TSI2597 - Architecting Storage Performance with Hitachi Storage v8.x

5 day ILT

5 Training Units

TSV2874 - Installing & Configuring Hitachi Infrastructure Analytics Advisor v2.0

3 hour Video

Free of charge

TSI2598 - Performing Advanced Operations with Hitachi Tuning Manager v8.x

3 day ILT

3 Training Units

TSI2421 - Using Hitachi Tuning Manager Predefined Reports

2 day ILT

2 Training Units

SSU2943 - Dynamic Threshold Storage Resource Monitoring with Performance Analytics Using HIAA

7 min Video

Free of Charge

TSC2835 - Managing Hitachi Infrastructure Analytics Advisor v2.x

1.5 hour WBT

Free of charge

TSV2834 - Managing Hitachi Data Center Analytics

1.5 hour video

Free of charge

TXI2900 - Managing Hitachi Performance Analytics

3 Day ILT

3 Training Units

Installation and Support

Implementation and Integration

Administration

Architecting

> Automation

TSU2889 - Setting Up and Submitting a Hitachi Automation Director Smart Provisioning Service

8 min Video

Free of Charge

TSI2690 - Managing Hitachi Automation Director v8.x

2 Day ILT

2 Training Units



Home



Products



Solutions



Certification



Add. Info

Foundation

Storage Systems

Storage Management

Data Protection

File & Content

Compute Platform

Infrastructure

Hitachi Command Suite 1/2

Hitachi Command Suite 2/2

> Virtualization

All Technical Roles

> Virtualization in VMware® Environments

TSI2847 - Configuring and Managing Hitachi Storage in a VMware Environment

5 day ILT

5 Training Units

> Virtualization in Microsoft® Environments

TSI2111 - Introducing Microsoft Private Cloud Solutions with Hitachi Storage

3 day ILT

3 Training Units





Modular Environments

Enterprise Environments

Mainframe Environments

> Data Protection

TSI2980 - Managing In-System and Remote Replications
5 day ILT 5 Training Units

CSI0147 - Hitachi Enterprise In-System & TrueCopy Remote Replications
5 day ILT 5 Training Units

TSI1595 - Hitachi Enterprise Storage Mainframe Replication
5 day ILT 5 Training Units

TSI0150 - Implementing Hitachi Universal Replicator on Open Systems
5 day ILT 5 Training Units

TSI1090 - Implementing Hitachi Universal Replicator for MF
5 day ILT 5 Training Units

TSE2630 - Migrating Data with Non-Disruptive Migration using HCS v8.x
6 hour vILT 1 Training Unit

TSI0165 - Hitachi Business Continuity Manager 6.x
4 day ILT 4 Training Units

TSI2805 - Managing Hitachi Data Instance Director v5.x
5 day ILT 5 Training Units

TSI2564 - Managing Replication Solutions v8.x
5 day ILT 5 Training Units

TSI2599 - Scripting with PERL
2 day ILT 2 Training Units



Hitachi Content Platform		Hitachi NAS Platform	
> Hitachi File and Content			
TCI2211 - Network Fundamentals			
5 day ILT		5 Training Units	
TSI1365 - Getting Started with the Hitachi Content Platform v7.x		TCI2910 - Managing Hitachi VSP Gx00/VSP Fx00 With NAS Modules and HNAS 4000 Series Systems	
6 hour vILT		5 Day ILT	
1 Training Unit		5 Training Unit	
TCI2743 - Managing Hitachi Content Platform v7.2		TCI1125 – Managing Hitachi NAS Platform	
3 day ILT		3 day ILT	
3 Training Units		3 Training Units	
TSI2650 - Operating and Managing Hitachi Data Ingestor 6.x		TCI2511 - Operating and Managing Data Protection and Data Migration on the Hitachi NAS Platform	
4 day ILT		2 day ILT	
4 Training Units		2 Training Units	
TSI2459 - Operating and Managing Hitachi Content Platform Anywhere v 3.x		TCI2508 – Administration and Operation of Hitachi NAS Platform	
1 day ILT		4 day ILT	
1 Training Units		4 Training Units	
TSI2764 - Introduction to REST API for Hitachi Content Platform		TCI2623 – Advanced Administration and Operation of Hitachi NAS Platform v12.x	
1 day ILT		3 day ILT	
1 Training Units		3 Training Units	

EMEA / APAC

AMERICAS ONLY



Home



Products



Solutions



Certification



Add. Info

Foundation

Storage Systems

Storage Management

Data Protection

File & Content

Compute Platform

Infrastructure

Hitachi Compute Blade 500

Hitachi Compute Blade 2500

> Hitachi Compute Platform

THI2452 - Managing Hitachi Compute Blades 500 and 2500

3 day ILT

3 Training Units



Vendor Training Offerings

> Brocade® and Cisco® Training Offerings

The screenshot shows the Brocade website's user interface. At the top, there is a navigation menu with links for Products, Solutions & Technology, Services & Support, Education, Partnerships, and Company. Below the menu is a search bar. The main content area features a large image of two women looking at a tablet. To the right of the image is a 'Log In' form with fields for 'User ID:' (with a hint 'e.g. John.Doe@brocade.com'), 'Password:', and a 'Take me to:' dropdown menu set to 'MyBrocade'. A red 'LOG IN' button is at the bottom of the form. To the right of the login form is a 'Register with Brocade' section with a 'REGISTER NOW' button. Below the registration section is a 'Security Advisories' link. At the bottom of the page, there are links for RSS Feeds, Contact Us, Site Map, Privacy, Legal, Careers, and Investor Relations.

The screenshot shows the Cisco website's 'Partner Education Connection' page. The top navigation bar includes links for Products & Services, Support, How to Buy, Training & Events, and Partners. Below the navigation is a 'Training Resources' section with the heading 'Partner Education Connection'. On the left, there is a sidebar menu with links for HOME, TRAINING & EVENTS, TRAINING RESOURCES (including Cisco Advanced Apprenticeships, Cisco Customer Loyalty, Cisco Digital Training, Cisco Learning Credits, Cisco Learning Services, Cisco Networking Academy, and Partner Education Connection), and a search bar. The main content area features a large image of a woman in a business suit. To the left of the image is a text box with the heading 'What if the value-add was YOU?' and the subtext 'Get specialized knowledge. Earn certifications. Up your game. It's fast and easy with the Partner Education Connection.' Below this text is a green 'Launch PEC' button. At the bottom of the page, there is a section titled 'Today is the first day of the rest of your career' with a 'Launch PEC' button. The text below this section describes the Cisco Partner Education Connection as a dynamic community of Cisco partners with a vast repository of high-quality training.

Brocade and Cisco offer various Instructor-Led Trainings, Web Based Courses and Videos on their Products and Solutions, which you can access via their own Learning Portals.

If required, we could setup on request such Trainings at our own facilities if there is enough demand.

You could also use your [HDS Training Units](#) as payment method for any public scheduled Brocade / Cisco classes. In the Americas, this can be done through [Global Knowledge](#).

For further details and any other queries, please contact your regional [HDS Training Manager](#).



UCP for VMware®

UCP for Microsoft®

UCP for SAP HANA®

> Hitachi Unified Compute Platform

THC2366 - Exploring the Architecture of the Hitachi Unified Compute Platform
30 min WBT Free of Charge

TXC2429 - Architecting Hitachi UCP Platform for SAP HANA Appliances
30 min WBT Free of Charge

TSI2847 - Configuring and Managing Hitachi Storage in a VMware Environment
5 day ILT 5 Training Units

TSI2111 - Introducing Microsoft Private Cloud Solutions with Hitachi Storage
3 day ILT 3 Training Units

TCI2527 - Managing and Monitoring Hitachi UCP 4000 and 4000E for VMware vSphere
5 day ILT 5 Training Units

TCC2691 - Managing Hitachi UCP for Microsoft Private Cloud
1 hour WBT Free of Charge



Pentaho Training (For more information on Pentaho Training go to: <http://www.pentaho.com/service/training>)

> Business Analytics and Dashboard

BA1000 Business Analytics User Console*

1 day Online / Public Classroom See site for pricing

BA2000 Business Analytics Report Designer

2 day Online / Public Classroom See site for pricing

BA3000 Business Analytics Data Modeling

2 day Online / Public Classroom See site for pricing

CT1000 Fundamentals

2 day Online / Public Classroom See site for pricing

> Data Integration

DI1000 Pentaho Data Integration Fundamentals

3 day Online / Public Classroom See site for pricing

DI2000 Pentaho and Hadoop Fundamentals

2 day Online / Public Classroom See site for pricing

DI3000 Predictive Analytics with PDI and Weka

2 day Online / Public Classroom See site for pricing

> Embedded Analytics

SLN7000 – Advanced Security

2 Day Online / Public Classroom See site for pricing

SLN7100 – Embedding Pentaho

2 Day Online / Public Classroom See site for pricing

> Installation and Support

AD1000 – Installation and Administration

2 Day Online / Public Classroom See site for pricing

SP1000 – Support and Troubleshooting

1 Day Online / Public Classroom See site for pricing

* BA1000 is a prerequisite for ALL capabilities

Hitachi training units can be used for Pentaho training, however training cards cannot be used.



Home



Products



Solutions



Certification



Add. Info

Storage Concepts

Storage Administration

Implementation – Business Analytics

Legend

Storage Concepts

> Self Study or Classroom Paths

Storage Concepts:
Storing and Managing Digital Data

HDS Academy Book Free PDF Download

CCI0110 – Hitachi Data Systems
Storage Concepts

2 day ILT 2 Training Units



HQT-0050 Hitachi Storage Concepts test

Kryterion - un-proctored

Hitachi Data Systems
Qualified Associate





Storage Administration

> Course Attendance Required*

TSI2565 - Managing Hitachi Storage with Hitachi Command Suite v8.x

5 day ILT

5 Training Units



HQT-6740 test
Storage Administration test

Kryterion - proctored

Hitachi Data Systems
Qualified Professional



INFRASTRUCTURE DOMAIN

*Course attendance required when taking a HQT-xxxx test in the classroom at the completion of the course. Depending on the location and course delivery format, the test may be offered and administered by the instructor at the conclusion of the course. Alternatively, HQT-xxxx technical tests are also available at [Kryterion test centers](#) world-wide.



Home



Products



Solutions



Certification



Add. Info

Storage Concepts

Storage Administration

Implementation – Business Analytics

Legend

> Page 1/3

Page 2/3

Page 3/3

Pentaho Business Analytics Implementation

Training available through Pentaho. Visit <http://www.pentaho.com/service/training> for more information on these suggested training opportunities.

> Course Attendance Recommended

BA1000 – Business Analytics User Console 1 Day Online / Classroom 1 Training Units	BA2000 – Business Analytics Report Designer 2 Day Online / Classroom 2 Training Units	BA3000 – Business Analytics Data Modeling 2 Day Online / Classroom 2 Training Units	AD1000 – Pentaho Installation and Administration 2 Day Online / Classroom 2 Training Units	SP1000 – Pentaho Support and Troubleshooting 1 Day Online / Classroom 1 Training Units
---	--	--	---	---



HCE-5910 Pentaho Business Analytics Implementation

Kryterion - proctored

Hitachi Data Systems Certified Specialist

BUSINESS ANALYTICS



Home



Products



Solutions



Certification




Add. Info

Pentaho Business Analytics Implementation

Training available through Pentaho. Visit <http://www.pentaho.com/service/training> for more information on these suggested training opportunities.

> Course Attendance Recommended

DI1000 – Pentaho Data Integration Fundamentals	DI2000 – Pentaho and Hadoop Framework Fundamentals
3 Day Online / Classroom 3 Training Units	2 Day Online / Classroom 2 Training Units

 HCE-5920 Pentaho Data Integration implementation exam Kryterion - proctored

Hitachi Data Systems Certified Specialist 

BUSINESS ANALYTICS



Pentaho Business Analytics Implementation

Training available through Pentaho. Visit <http://www.pentaho.com/service/training> for more information on these suggested training opportunities.

> Course Attendance Recommended

BA1000 – Business Analytics User Console 1 Day Online / Classroom 1 Training Units	BA2000 – Business Analytics Report Designer 2 Day Online / Classroom 2 Training Units	BA3000 – Business Analytics Data Modeling 2 Day Online / Classroom 2 Training Units	CT1000 – Pentaho Ctools Fundamentals 2 Day Online / Classroom 2 Training Units	DI1000 – Pentaho Data Integration Fundamentals 3 Day Online / Classroom 3 Training Units
DI2000 – Pentaho and Hadoop Framework Fundamentals 2 Day Online / Classroom 2 Training Units	DI3000 – Predictive Analytics with PDI and Weka 2 Day Online / Classroom 2 Training Units	SLN7000 – Advanced Security 2 Day Online / Classroom 2 Training Units	SLN7100 – Embedding Pentaho 2 Day Online / Classroom 2 Training Units	



HCE-3900 Pentaho solutions architect exam

Kryterion - proctored

Hitachi Data Systems Certified Expert







BUSINESS ANALYTICS



Additional Information

> Legend

TSI2597 - Architecting Storage Performance with Hitachi Storage v8.x 5 day ILT 5 Training Units	Course Code, Title, Duration, Delivery Type and required Training Units
 test Name Kryterion - un-proctored	Open - Book test
 test or exam Name Kryterion - Proctored	Proctored test or exam
Qualification Level 	Qualification Credential
Certification Level 	Certification Credential





Customer Administration Solutions

> SAP HANA – Administration, Operations, and Support (SPS 08)

The following administration solutions training is available directly from SAP. Please use the link below to navigate to their site for scheduling, pricing, etc:

[SAP HANA - Administration, Operations & Support \(SAP HANA SPS08\)](#)

Americas: Use Hitachi training units to attend third-party training through [Global Knowledge](#)

HA100 - SAP HANA Introduction

2 Days Classroom

Contact SAP for Pricing

HA200 - SAP HANA Installation and Operations
5 Days Classroom

Contact SAP for Pricing

OHA10 – OKP SAP High-Performance Analytic Appliance 1.0 (SAP HANA (1.0))
E-Learning

Contact SAP for Pricing

> VMware – vSphere: Install, Configure, Manage [V5.5]

The following administration solutions training is available directly from VMware. Please use the link below to navigate to their site for scheduling, pricing, etc:

[VMware vSphere: Install, Configure, Manage \[V5.5\]](#)

Americas: Use Hitachi training units to attend third-party training through [Global Knowledge](#)

Delivery Types: Classroom, Lab, Live Online, Self-Paced, vFlex-ILT,
Products: VMware ESXi, VMware vCenter Server, VMware vSphere
Roles: Administrator, Engineer

> Microsoft Hyper-V

The following administration solutions training is available directly from Microsoft. Please use the link below to navigate to their site for scheduling, pricing, etc:

[Course 55021A: Configuring and Administering Hyper-V in Windows Server 2012](#)

Americas: Use Hitachi training units to attend third-party training through [Global Knowledge](#)

> Oracle

The following administration solutions training is available directly from Oracle. Please use the link below to navigate to their site for scheduling, pricing, etc:

[Oracle Database Administration Training \(Select your database version\)](#)

Americas: Use Hitachi training units to attend third-party training through [Global Knowledge](#)



Additional Information

The way to get the best flexibility and value for training, and maximise the benefit and potential of your investment in HDS technology and skills.

> Training Unit

Hitachi Training Units help you protect your training budget, cover your organization from unexpected medium-term training requirements, and enable you to earn a valuable discount on volume purchases. One Training Unit typically allows for one person to attend a publicly scheduled, one-day instructor-led (ILT) course. It can also be exchanged for any Hitachi Data Systems training product or service. You select the number of Training Units that best meet your training requirements, budget allowance and time restrictions.

> Terms

Training Units are valid for one year from the date of purchase and can be acquired in any number. All HDS education products and services are priced in Training Units as well as in local currency.

> What's Next ?

Contact your HDS Regional Training Manager for assistance in deciding how many Training Units or Training Cards you should purchase, that would best fit your training needs.



Americas



Europe, Middle East, and Africa



Asia Pacific



Additional Information

The way to get the best flexibility and value for training, and maximise the benefit and potential of your investment in HDS technology and skills.

> Training Card

Take advantage of unlimited instructor-led training (ILT) taught by storage experts. In addition, there is a wide range of convenient, virtual Instructor-led training (vILT) and web-based trainings (WBT). Hitachi Training Cards will help you protect your training budget and cover your organization from unexpected medium-term training requirements. Simplify your training budget with one, fixed-price Purchase and one purchase order.

> Terms

A Training Card is valid for one year from the date of purchase. The Training Card is non-transferable and must be used by the named Customer employee. The Training Card is used for any public scheduled training class in a HDS Academy Facility in the country of purchase. Training Cards are not used for on-site or customized training courses.

> What's Next ?

Contact your HDS Regional Training Manager for assistance in deciding how many Training Units or Training Cards you should purchase, that would best fit your training needs and timescales.



Americas



Europe, Middle East, and Africa



Asia Pacific



Additional Information

> Learning Center

The HDS Learning Center provides easy access to our instructor led, online and downloadable training and exams, as well as full support for Hitachi Data Systems Certified Professional, and other qualification programs.



Access the HDS Learning Center via the following link:
<https://learningcenter.hds.com>

The quickest way to find a course is to use the search box, which you will find at the top right of the screen. As you start to type in your search, results will start to appear. You can also simply enter the course code!

If you hit the enter key now, the full list becomes available together with course descriptions, so you can easily select the right course.

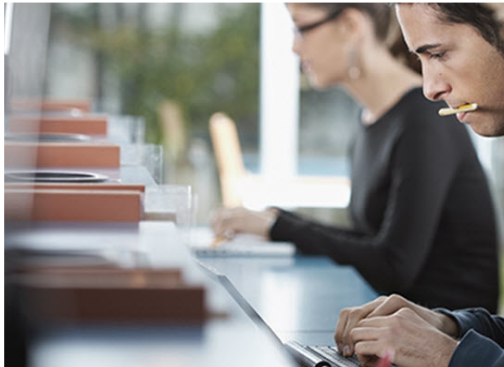
To register for a course, click on the course title. If it is a web-based training course where no payment is required, you will be taken to a screen where you can directly launch the course. If it is an instructor-led event, you will then need to select which session you wish to attend. Click on the sessions tab and all available classes will be shown. You can then select the class and confirm payment type.

In order to access to the HDS Learning Center (LMS), all customers and partners need to have an account in the HDS portal database. If you don't have a valid HDS Portal account yet, please self-register via the following link https://sso.hds.com/en_us/user-registration.html. For any questions on this process contact: HDS.Academy.help@HDS.com

Additional Information

> Course Descriptions

A detailed course description is available for each of our courses. You can get a particular course description from the HDS Learning Center. Here are the simple steps.



Access the HDS Learning Center via the following link:

<https://learningcenter.hds.com>

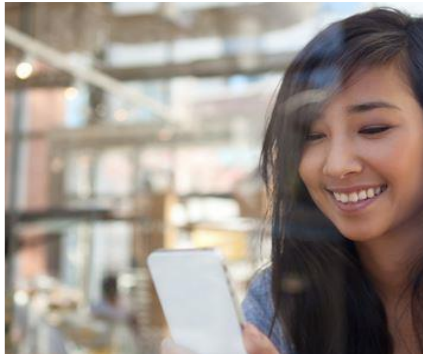
Search for the course you're looking for by keyword or course code. Select a course, and a full list becomes available with a course description, so you can easily select the right course.

A PDF of the full course description is available under resources at the bottom of the screen.



Additional Information

> Contact



The HDS Academy team looks forward to supporting you with all your HDS training requirements. Please contact your Regional Training Manager, or e-mail us at one of the following geography based addresses:

We look forward to setting up and facilitating your training deployments including training needs assessments, development of training and certification plans, and training delivery scheduling.



Americas



Europe, Middle East, and Africa



Asia Pacific

> Join the Community

