

Log analytics has quickly become critical component of IT strategy for operations management of virtualized and cloud infrastructures. Hitachi Storage Content Pack for VMware vRealize Log Insight delivers real-time log management to administrators for intelligent analysis and better troubleshooting across physical and virtual infrastructure.

DATASHEET

Hitachi Storage Content Pack for VMware vRealize Log Insight

Reduce Troubleshooting Times and IT Costs, Improve Operational Efficiency

Efficient IT Operations

Hitachi Storage Content Pack for VMware vRealize Log Insight makes IT teams more efficient by providing deep visibility to find issues and solve elusive problems. It simplifies searching for errors by collecting and grouping information to show important, relevant and useful events.

The solution collects and analyzes all types of Hitachi storage systems related data, as shown in Table 1, and provides intuitive dashboards. For example, see the overview dashboard in Figure 1. As shown

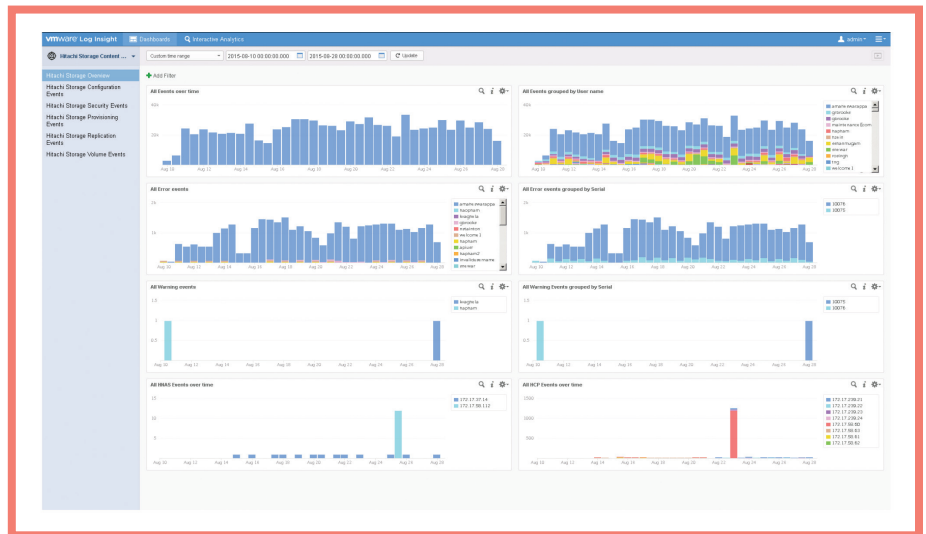


Figure 1. Overview Dashboard

TABLE 1. COMPATIBILITY MATRIX

Hitachi Storage System	Microcode Version	VMware vRealize Log Insight 3.3
Hitachi Virtual Storage Platform (VSP) G200, VSP G400, VSP G600, VSP G800	83-01-03 or above	
VSP G1000	80-02-22 or above	
VSP F400, VSP F600, VSP F800	83-03-01-40/00 or newer	
VSP Gx00 (unified)	83-03-20-40/01 or newer	
VSP	80-02-40-00 or above	
Hitachi NAS Platform (HNAS) 4040, HNAS 4060, HNAS 4080 and HNAS 4100	12.3, 12.6	
Hitachi Content Platform	6.1.1, 7.0.0, 7.1.1 and 7.2.0	
Hitachi Unified Storage VM	73-03-44-00/00 or newer	

in Table 2, various types of dashboards can be selected, including overview, configuration, security, provisioning, replication and volume. Now IT teams can derive insightful information from larger data sets and correlate events across multiple tiers of virtual infrastructure, cutting down troubleshooting times, reducing IT costs and improving operational efficiency.

Proactive Management

Storage Content Pack for VMware vRealize Log Insight provides automatic alerts, helping IT teams to discover issues and prevent potential issues from proactive monitoring approach. It provides administrators with a comprehensive view into Hitachi storage systems, enabling them to spot potential issues and keep track of components showing departure from normal operation logs. Proactive IT management with the help of this joint solution results in reduced downtime and better application availability.



Next Steps

Download

Hitachi Storage Content Pack for VMware vRealize Log Insight is free-of-charge item that can be downloaded from either support.hds.com or the VMware Solution Exchange.

For More Information

To learn more about how Hitachi Data Systems can help you accelerate your journey to hybrid cloud with reliable storage and converged infrastructure solutions, visit [VMware integrations](#).

TABLE 2. DASHBOARDS

Category	Dashboard Detail
Overview Dashboard	<ul style="list-style-type: none"> ■ Storage events over time. ■ All events over time grouped by user name. ■ Error events. ■ Error events by storage serial number. ■ Warning events. ■ Warning events by storage serial number.
Configuration Dashboard	<ul style="list-style-type: none"> ■ Account management events. ■ Account management events grouped by storage serial number. ■ Configuration events. ■ Configuration events grouped by storage serial number. ■ General management events. ■ General management events by storage serial number.
Security Dashboard	<ul style="list-style-type: none"> ■ Authentication events. ■ Authentication events grouped by user name. ■ Failed login events. ■ Failed login events grouped by user and storage serial number. ■ Storage login events grouped by login type.
Provisioning Dashboard	<ul style="list-style-type: none"> ■ Provisioning events. ■ Provisioning events grouped by storage serial number. ■ Failed provisioning events grouped by provisioning tasks. ■ Failed provisioning events grouped by storage serial number. ■ Delete provisioning events grouped by user ID. ■ Delete tasks events grouped by storage serial number.
Replication Dashboard	<ul style="list-style-type: none"> ■ Local replication events. ■ Local replication events grouped by storage serial number. ■ Remote replication events. ■ Remote replication events grouped by storage serial number.
Volume Dashboard	<ul style="list-style-type: none"> ■ Hitachi Universal Volume Manager events. ■ Universal Volume Manager events grouped by storage serial number. ■ Hitachi Volume Migration events. ■ Volume Migration events grouped by storage serial number. ■ Volume shredding events. ■ Volume shredding events grouped by storage serial number.
Hitachi NAS Platform (HNAS) Overview	<ul style="list-style-type: none"> ■ All HNAS events over time. ■ All HNAS events over time group by IP. ■ All HNAS information events over time. ■ All HNAS information events over time group by IP. ■ All HNAS warning events over time. ■ All HNAS warning events over time group by IP. ■ All HNAS severe events over time. ■ All HNAS severe events over time grouped by IP.
Hitachi Content Platform (HCP) Dashboard	<ul style="list-style-type: none"> ■ All HCP events over time. ■ All HCP events over time grouped by IP. ■ All HCP authentication events over time. ■ All HCP authentication events over time group by originating IP. ■ All HCP events over time grouped by node ID.

Hitachi Data Systems



Corporate Headquarters
 2845 Lafayette Street
 Santa Clara, CA 95050-2639 USA
www.HDS.com community.HDS.com

Regional Contact Information
Americas: +1 866 374 5822 or info@hds.com
Europe, Middle East and Africa: +44 (0) 1753 618000 or info.emea@hds.com
Asia Pacific: +852 3189 7900 or hds.marketing.apac@hds.com