

Hitachi Automation Director software lets you automate common and repetitive storage administration tasks. With its predefined templates and integrated service-builder tool, you can improve productivity and control rising storage costs.

DATASHEET

Hitachi Automation Director

IT staff often struggle to keep up with the technology and management complexities of constant data growth and infrastructure changes. Storage management, in particular storage provisioning tasks, are often time consuming, require specialized skills and can be prone to human error.

Hitachi Automation Director software enables you to provide self-service storage infrastructure. Automation Director simplifies common and repeatable storage tasks with intelligent automated workflows that incorporate storage management best practices and infrastructure abstraction.

Automation Director's storage provisioning workflows are built on the foundation of standardizing both the storage service request and service fulfillment. It provides predefined service templates to create a catalog of standard IT service offerings (see Figure 1) for self-service access.

Automation Director is application focused. It supports integrated management workflows that deliver recommended storage configurations for leading business applications, hypervisors and environments, including Oracle, Microsoft® Exchange, Microsoft SQL Server®, Microsoft Hyper-V®, VMware and OpenStack. You can customize these best-practice service templates and components to automate storage provisioning tasks. Administrators can access the templates, depending on expertise and access privileges, to add management functions and further customize self-service capabilities.

By simplifying storage delivery through a self-service catalog, Automation Director helps you deliver new storage services quickly, efficiently and cost-effectively. It allows you to simplify and automate complex provisioning processes, freeing your IT staff for more strategic work.

Automated Provisioning

Storage provisioning can be a complicated and long process, requiring highly skilled administrators, using multiple management tools. Automation Director leverages intelligent analysis of your current environment to simplify the process. It provides best-practice storage provisioning that quickly and efficiently fulfills storage capacity requests for new business applications.

Automation Director includes smart, automated storage-provisioning capabilities for unstructured (file-based) data and structured (block-based) data applications. Select the desired level of storage performance and Automation Director automatically chooses the best-suited storage resources for the application. Predefine file-service templates in the storage service catalog to automate file-server provisioning and automate your most complex storage operations, including storage area network (SAN) zoning and provisioning for global-active device environments. Automation Director also provides VMware service templates for enhanced VMware vSphere operation, configuration and integration, as well as OpenStack cloud components for use in service templates.

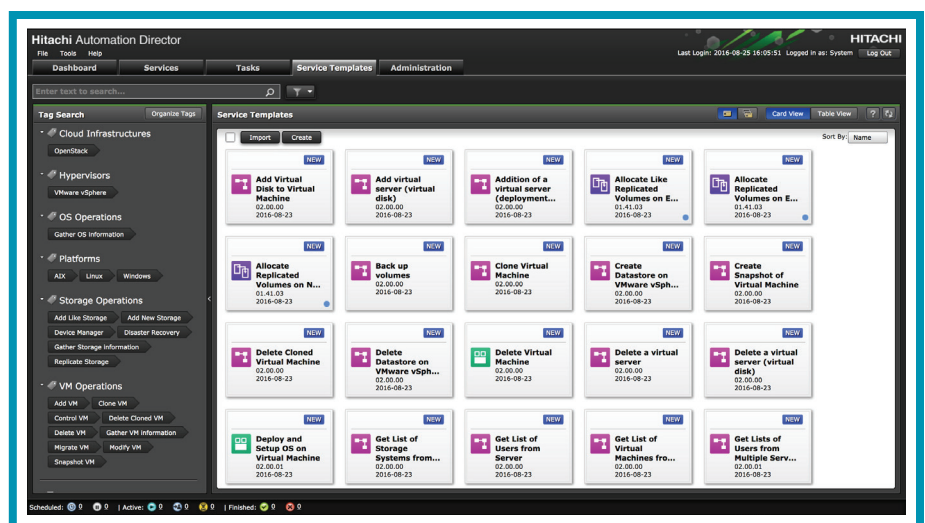


Figure 1. Create standard IT service requests with predefined storage service templates.

Storage Service Catalog

Storage configuration complexities and varied IT service requests can delay deployment of new business application resources. The virtualized storage resource abstraction of Automation Director hides these complexities and allows you to create catalogs of new storage-service templates and storage-infrastructure profiles. This streamlines and simplifies delivery of new and different IT-service requests. For example, to request storage resources for a database application, a user selects a service template based on storage provisioning best practices for Oracle databases. The template might specify Tier 1 storage capacity for the core database while the database logs can utilize lower, Tier 3 storage capacity. High-performance applications might utilize a flash-storage-service template that provisions the highest performing storage resources available to deliver maximum performance.

Management Workflow Customization

Building new management workflows often requires changes to address unique user or application requirements. Automation Director's service-builder tool provides an open workbench so you can create new custom management workflows or add functions to an existing service template. The service-builder tool allows complete customization to automate management workflows that incorporate various data center resources. It lets you integrate workflows into a cloud-based service portal for advanced infrastructure self-service projects. In addition, Automation Director provides standard web-based APIs to easily integrate and execute automated workflows with external management applications.

Business Benefits

Reduce Management Operation Costs

- Control rising management operation costs through automation.
- Maximize storage utilization by automatically using optimized, cost-efficient storage allocations for storage capacity requests.

HITACHI AUTOMATION DIRECTOR FEATURE HIGHLIGHTS

- Intelligent automation workflows to streamline the storage-provisioning process for structured (file-based) and unstructured (block-based) data applications.
- A catalog of predefined service templates incorporates Hitachi best practices into storage provisioning.
- Customizable storage-service templates with minimal required input that can be used across different administrative users.
- Optimized storage configurations for common business applications, hypervisors and environments, such as Oracle, Microsoft Exchange, Microsoft SQL Server, Microsoft Hyper-V, VMware and OpenStack.
- Support for Hitachi Virtual Storage Platform (VSP) family and Hitachi Storage Virtualization Operating System.
- Analysis of current storage pool capacity utilization and performance to automatically determine the optimized location for new storage capacity requests.
- Support for end-to-end automated provisioning for SAN zoning using predefined templates and zone creation as part of the provisioning process.
- Integrated access controls support multitenancy across a virtualized pool of heterogeneous storage resources.
- Simplifies and automates complex two- and three-data-center disaster recovery configurations.
- Service-builder tool (with debugger) creates and modifies existing management workflows and integrates new plugin components via a REST-based API.
- Intuitive graphical user interface defines, executes and monitors automated storage provisioning operations.
- Task management dashboard monitors the status of automation tasks and quickly alerts users to troubleshoot any unsuccessful tasks.

- Reduce storage capital costs by effectively leveraging tiered storage resources.
- Achieve significant cost savings by automating complex disaster-recovery configurations during the storage-provisioning process.

Simplify Management Complexity and Improve Reliability

- Increase administrative productivity by automating complex storage-provisioning tasks.
- Leverage Hitachi best practices to improve storage-provisioning operations.
- Save administrative time and resources with smart storage provisioning using best practices.
- Integrate storage-provisioning workflows into your existing IT-management operations using the REST API.

Storage Infrastructure Self Service

- Create new and customized management workflows with the open service-builder workbench to incorporate various IT infrastructure and storage resources.
- Standardize storage service offerings and delivery with predefined service templates.
- Enable multiple administrators to use service templates to reduce human error.

Services and Training

Hitachi Data Systems Global Services and Hitachi valued partners help you to quickly realize the benefits and cost savings of Automation Director with assessment, planning and design, installation, management and support services.

Hitachi Data Systems

Corporate Headquarters
2845 Lafayette Street
Santa Clara, CA 95050-2639 USA
www.HDS.com | community.HDS.com

Regional Contact Information
Americas: +1 866 374 5822 or info@hds.com
Europe, Middle East and Africa: +44 (0) 1753 618000 or info.emea@hds.com
Asia Pacific: +852 31897900 or hds.marketing.apac@hds.com



HITACHI is a trademark or registered trademark of Hitachi, Ltd. Microsoft, Hyper-V and SQL Server are trademarks or registered trademarks of Microsoft Corporation. All other trademarks, service marks, and company names are properties of their respective owners.