

“The UCP for SAP HANA [solution] from HDS provides a reliable supporting platform for the company’s SAP HANA business, with its outstanding quality and professional technical services.”

*Xie Defang, CIO  
Zhengzhou Dennis Department Store Co., Ltd.*



## Chinese Retail Group Relies on Hitachi Unified Compute Platform for Move to High-Performance SAP HANA Computing

Zhengzhou Dennis Department Store Co., Ltd., a large retail business group, was seeking to bring high-performance, in-memory computing to its SAP environment by moving to the HANA platform. The company selected the Hitachi Unified Compute Platform for SAP HANA Platform (UCP for SAP HANA) solution, which successfully handled the move, thanks to its reliable quality and professional technical services.

Launched on November 16, 1997, Zhengzhou Dennis Department Store Co., Ltd., is a retail business group under Taiwan Dongyu Group. The organization integrates department stores, hypermarkets, convenience stores and logistics centers in China. It launched the first Hyper Mart in Zhengzhou in June 1998, which opened up a diversified operation mode of department stores and hypermarkets.

With Zhengzhou as the core, the company has a presence across the Henan province with more than 100 department stores, hypermarkets and convenience stores. Its annual revenue reaches more than 15 billion yuan. The company has won many awards, including “Outstanding Foreign-invested Enterprise” of Henan province, “Advanced Foreign-Invested Enterprise of High Overall Efficiency” of Zhengzhou, “Model Shop for Implementing Code of

Ethics in Shops and Branding by Sincere Services,” “Consumer Trusted Shopping Mall,” and “Outstanding Contribution Award for Non-publicly Owned Enterprise,” among others.

### The Challenges

#### IT Environment

Zhengzhou Dennis Department Store Co., Ltd., has operated its SAP Enterprise Resource Management (ERP) system, deployed on Oracle, Sybase and other traditional databases, for many years. With the rapid expansion of business, its IT systems became larger, imposing higher requirements for real-time processing of business data. In order to meet the requirements of fast data analysis and real-time data processing, the company decided to build a future-proof ERP system based on SAP HANA high-performance in-memory computing platform.

### Zhengzhou Dennis Department Store Co., Ltd.

#### INDUSTRY

Retail and Wholesale

#### SOLUTION

Hitachi Unified Compute Platform for the SAP HANA Platform

#### HARDWARE

Hitachi Compute Blade 2000,  
Hitachi Unified Storage 130

#### SERVICES

SAP HANA Converged Infrastructure Design and Planning Services and Hitachi Unified Compute Platform Installation and Implementation Services provided by Hitachi Data Systems Global Solution Services

### Benefits at a Glance

- Improved performance.
- Reduced the cost of operation and maintenance.
- Increased speed for online business.



With its high performance, high reliability, flexible scalability and real availability, Hitachi UCP for SAP HANA fully meets the business requirements of SAP HANA at Dennis Department Store.

**Project Objectives**

- Build a high-performance and highly reliable unified compute platform for SAP HANA to meet the needs of production and operation.
- Provide a disaster recovery solution for the ERP production system, ensure data security, and make sure that the disaster recovery system can quickly take over the operation for business continuity in case of failures in production systems.
- Ensure that the unified compute platform is scalable to meet the growing needs of the company.

**Why Hitachi Data Systems?**

Dennis Department Store selected Hitachi Data Systems to deliver the solution to these challenges after considering the following items:

- **Qualified solution.** Hitachi UCP for SAP HANA is SAP-certified with a proven track record in large enterprises.
- **High availability.** With its enterprise-class blades and high-performance storage hardware architecture, Hitachi UCP for SAP HANA provides higher performance and scalability than its competitors, as demonstrated in deployment cases.
- **Successful partnership with SAP.** As SAP's highest-level partner (SAP Global Technology Partner/Global Service Partner), HDS has more than 2 decades of partnership with SAP in global integrated solutions implementations. And HDS provides 1-stop unified after-sale service for SAP HANA applications, offering customers peace of mind.

**The Solution**

Based on the project objectives of Dennis Department Store, and in full consideration of its business application demands, Hitachi Data Systems provided a sound infrastructure. The competitive solution includes 2 parts:

**A Reliable Infrastructure for SAP HANA**

Part of a new generation of in-memory databases, SAP HANA delivers high-performance processing for transaction data as well as data mining, but it also has more stringent requirements on hardware

platforms. Hitachi UCP for SAP HANA is a converged infrastructure solution for SAP HANA for a new generation of converged data centers. The solution employs Hitachi enterprise-class blades as the compute unit, and proven high-performance Hitachi storage as the storage unit. UCP for SAP HANA is pre-installed with SAP HANA software and optimized for HANA in-memory computing, providing a solid integrated infrastructure for SAP HANA applications. Based on current and expected data requirements, HDS

**UCP for Business Analytics**  
[LEARN MORE](#)

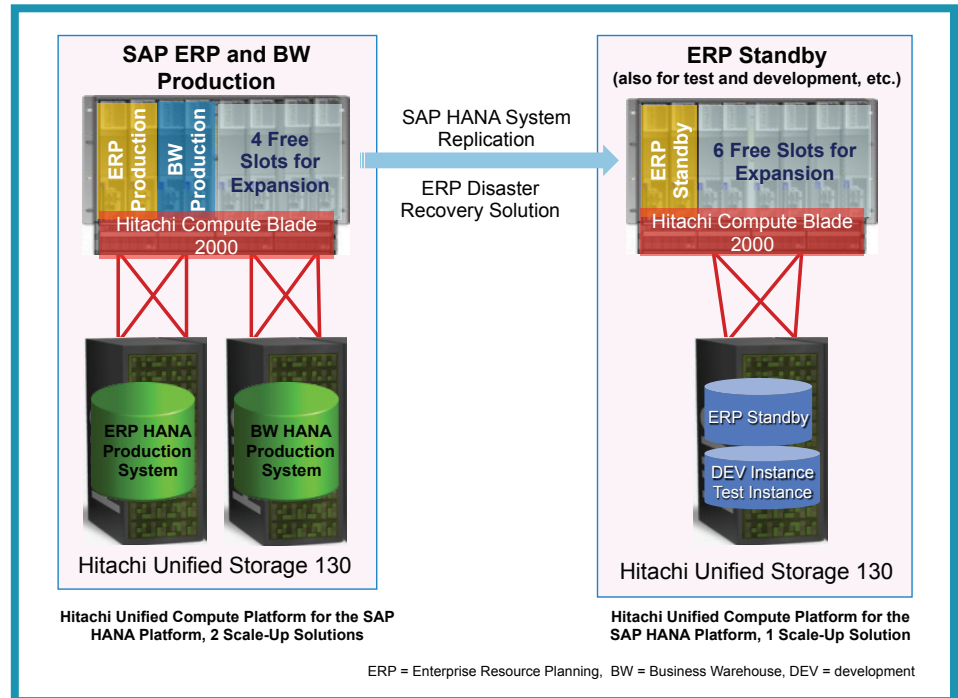


Figure 1. Configuration of the Hitachi Solution for Dennis Department Store

recommended the scale-up version of the solution (see Figure 1). The scale-up version includes 2 stacks of UCP for SAP HANA, for ERP and SAP Business Warehouse (BW) production applications, and 1 stack for a disaster recovery system for ERP applications.

With its high performance, high reliability, flexible scalability and real availability, Hitachi UCP for SAP HANA fully meets the business requirements of SAP HANA at Dennis Department Store.

### Disaster Recovery for ERP on HANA System

After communications with the Dennis Department Store and in-depth analysis of the customer's needs, HDS recommended SAP HANA System Replication for disaster recovery. This protection solution replicates the data from the ERP production system to the disaster recovery system in real time. It provides the following advantages:

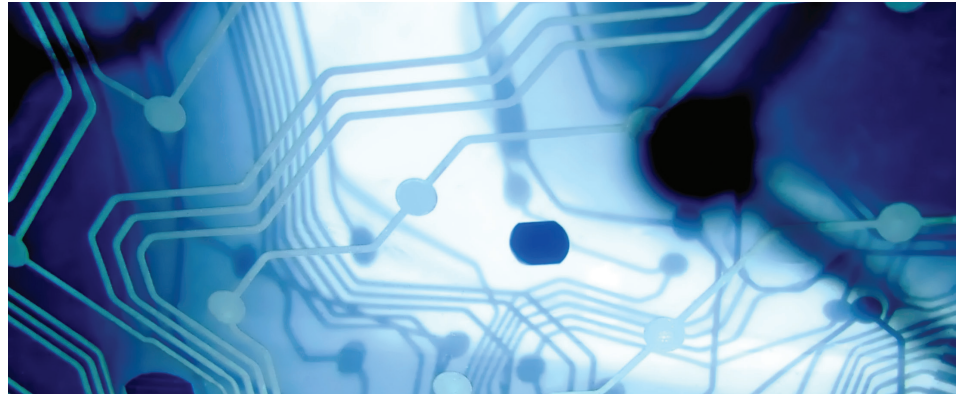
- **Meet RPO/RTO requirements.** With real-time replication, System Replication keeps a copy of all data and changes instantly in the disaster recovery system. In case of a failure with the production systems, the standby will immediately take over the operation for business continuity with a recovery time objective of less than 30 minutes.
- **Make the best of resources of the device.** Normally, the standby device simultaneously runs development, testing, quality assurance and other nonproduction SAP HANA applications.
- **Minimize investment costs and simplify management.** System Replication is included in the standard SAP HANA application package without additional cost. This data protection solution is mature and easy to manage.

### The Benefits

With its high performance, high reliability and flexible scalability, Hitachi UCP for SAP HANA lays a solid foundation for the SAP HANA platform of Dennis Department Store. The solution improves IT efficiency and drives business growth. By using System Replication for disaster recovery, the company's investment is minimized, and its core data is secured.

Innovation is the engine of change, and information is its fuel. Innovate intelligently to lead your market, grow your company, and change the world. Manage your information with Hitachi Data Systems.

**INNOVATE**  
WITH INFORMATION™  
[www.HDS.com/innovate](http://www.HDS.com/innovate)



- **High performance.** Hitachi UCP for SAP HANA uses HDS enterprise-class blades. With the high-performance Intel Xeon E7 series processors, the servers have a unique mixed I/O architecture and SMP compute node scale-out capabilities, providing more powerful processing than UNIX minicomputers. The back end adopts high-performance disk arrays for data storage, providing better data throughput than the local hard disks while reducing the data loading time at startup.
- **High reliability.** Both the blade compute unit and the disk array storage unit of Hitachi UCP for SAP HANA use full-redundancy architecture, which provides better reliability. Particularly, the data storage adopts more secure and reliable disk arrays rather than local hard disks, enhancing data security.
- **Flexible scalability.** A single node of Hitachi UCP for SAP HANA can be upgraded from the current 512GB to 1TB, 2TB or 4TB. Blades, memory and disks for storage system expansion can be added to the current system, ensuring smooth upgrade and scalability of the platform, meeting the needs of business growth, and protecting investments.
- **Real availability.** Hitachi UCP for SAP HANA is designed for applications. Combining the most advanced blade compute and storage technologies, it is specially optimized for HANA with professional technical services. As a trusted platform for SAP HANA customers, the solution is SAP-certified and demonstrates outstanding performance in actual customer environments.
- **Simplifies IT and improves productivity.** Hitachi UCP for SAP HANA integrates compute, network, storage and system software into 1 converged infrastructure platform. Optimized for HANA, it simplifies IT structures, improves IT efficiencies, and reduces deployment time, enabling business to go live faster, and reducing operating costs.
- **Professional services.** HDS offers professional consulting, implementation and maintenance services for Hitachi UCP for SAP HANA, which guarantee the reliable operation of the system. And HDS also provides a 1-stop single point of contact services for all the modules within UCP, eliminating the complexities of using and maintaining the IT systems.

 **Hitachi Data Systems**



**Corporate Headquarters**

2845 Lafayette Street  
Santa Clara, CA 95050-2639 USA  
[www.HDS.com](http://www.HDS.com) [community.HDS.com](http://community.HDS.com)

**Regional Contact Information**

**Americas:** +1 408 970 1000 or [info@hds.com](mailto:info@hds.com)  
**Europe, Middle East and Africa:** +44 (0) 1753 618000 or [info.emea@hds.com](mailto:info.emea@hds.com)  
**Asia Pacific:** +852 3189 7900 or [hds.marketing.apac@hds.com](mailto:hds.marketing.apac@hds.com)

© Hitachi Data Systems Corporation 2014. All rights reserved. HITACHI is a trademark or registered trademark of Hitachi, Ltd. Innovate With Information is a trademark or registered trademark of Hitachi Data Systems Corporation. All other trademarks, service marks, and company names are properties of their respective owners.

Notice: This document is for informational purposes only, and does not set forth any warranty, expressed or implied, concerning any equipment or service offered or to be offered by Hitachi Data Systems Corporation.

SS-521-A DG July 2014