

Hitachi IT Operations Analyzer and Dell

Hitachi has developed tightly integrated plug-ins that provide detailed monitoring of Dell servers and Dell storage devices within your data center. By using plug-ins for Dell PowerEdge servers and Dell EqualLogic storage with Hitachi IT Operations Analyzer, you can gain better insight into Dell devices. At the same time, the solution can help you to reduce costs and mean time to diagnosis of data center issues.

Gain a Holistic View of Your Data Center, Including Dell Servers and Storage

Challenge

In all data centers, maintaining availability and performance of servers and storage devices depends on visibility across applications, operating systems and servers. Achieving that end-to-end visibility requires tight integration with Dell's own advanced capabilities, such as OpenManage Server Administrator (OMSA).

Also in all data centers, problems are inevitable. The only questions are: How you will respond, and how quickly? Without end-to-end visibility across applications, operating systems, servers (including hardware specific metrics of Dell servers), and both network and storage devices (including Dell EqualLogic storage systems), you might be forced to "fight fires" on a daily basis, using multiple applications to try to identify the source of the problem.

Solution

Hitachi IT Operations Analyzer provides the holistic view required to monitor the Dell PowerEdge servers and Dell EqualLogic

storage devices in your data center. The solution makes it possible to:

- Monitor your entire infrastructure through a single pane of glass.
- Instantly gain deeper insight into Dell servers and EqualLogic storage.
- Keep Dell devices healthy and operating at peak performance.

Combined Performance

Bringing Hitachi IT Operations Analyzer into your data center can transform operations and provide a holistic view of the data center, resulting in significant benefits, including:

- Up to 90% faster mean time to diagnose
- Proactive alerting, leading to improved uptime and greater customer satisfaction
- Insight into major availability and performance metrics
- Virtual machine (VM) awareness and virtual server connectivity
- Reduced system downtime
- Time and resource savings for busy system administrators

Features

Hitachi IT Operations Analyzer offers several features, including a proprietary root cause analysis engine, that make it easier for administrators to monitor the Dell servers and storage devices. These features help you identify, diagnose and remedy problems faster.

Enhanced Visibility into Dell Servers and Storage

The Dell OMSA Plug-in package for Dell servers contains 2 plug-ins that are used to discover and monitor Dell servers, one for Microsoft Windows servers and the other for Linux servers.

Another plug-in, the Dell EqualLogic plug-in enables the discovery and monitoring of the Dell EqualLogic PS Series Storage Arrays through IT Operations Analyzer.

Root Cause Analysis

The root cause analysis engine in IT Operations Analyzer runs automatically in the background, constantly looking for any critical events.



Technology Partner

For your Dell devices and other devices in the data center, root cause analysis can:

- Reduce mean time to diagnose issues up to 90%.
- Quickly determine the root cause of the real problem using built-in intelligence.
- Automatically perform bottleneck analysis.
- Enable analysis of a large number of event alerts in just a few minutes.
- Provide probability levels as to which devices are creating the issues.

Proactive Alerting

IT Operations Analyzer can help administrators move from a reactive stance of “putting out fires” to gaining visibility into potential issues before they upset end users or create outages; they can improve customer satisfaction and adhere to SLAs.

With proactive alerting, administrators can create performance thresholds on devices. These thresholds may be related to chassis metrics like voltage levels, or to server performance metrics such as CPU load, or other critical metrics. By alerting them to potential issues, administrators can take action to help prevent performance bottlenecks before they occur.

Insight into Virtual Machines

IT Operations Analyzer provides deep insights into VMs running in data centers. Using information easily accessible through IT Operations Analyzer’s virtual frame, which supports VMware ESX and ESXi, as well as Microsoft Hyper-V, administrators can quickly determine where VMs reside and consolidate or deploy VMs more efficiently.

On a single virtualized Dell PowerEdge server, IT Operations Analyzer makes it possible to view:

- Application and chassis metrics
- Operating system metrics in virtual servers
- System metrics at the hypervisor level

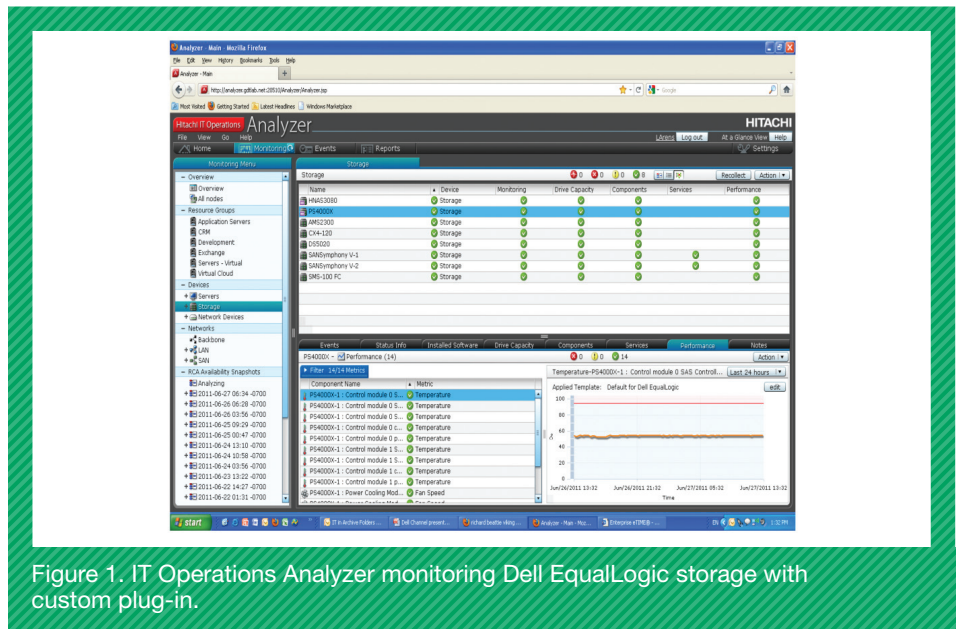


Figure 1. IT Operations Analyzer monitoring Dell EqualLogic storage with custom plug-in.

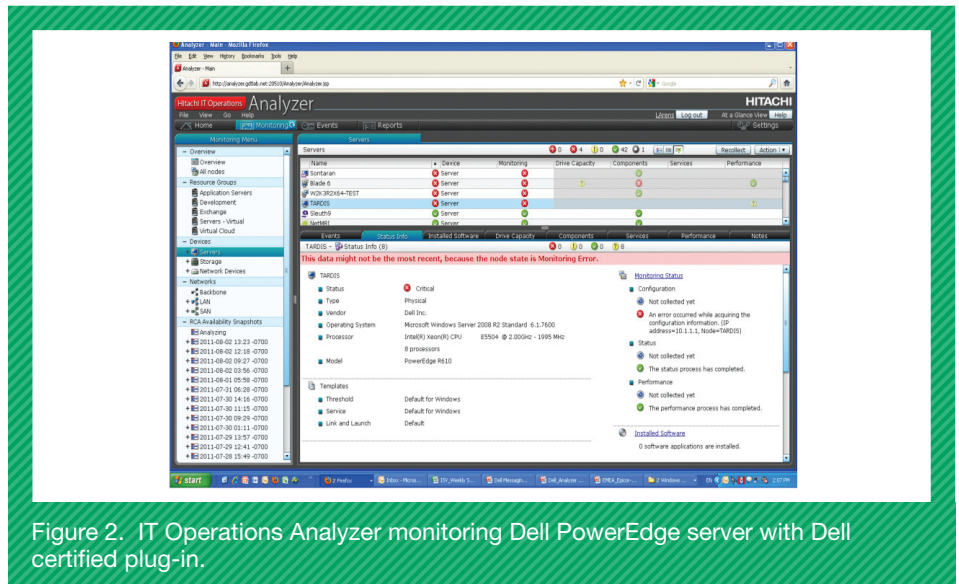


Figure 2. IT Operations Analyzer monitoring Dell PowerEdge server with Dell certified plug-in.

In addition, IT Operations Analyzer allows a view of connectivity to upstream and downstream devices.

Learn More

To learn more about how Hitachi IT Operations Analyzer improves visibility in data centers, visit: www.itoperations.com/Partners/.



Hitachi Data Systems

Corporate Headquarters
750 Central Expressway
Santa Clara, California 95050-2627 USA
www.HDS.com

Regional Contact Information
Americas: +1 408 970 1000 or info@hds.com
Europe, Middle East and Africa: +44 (0) 1753 618000 or info.emea@hds.com
Asia Pacific: +852 3189 7900 or hds.marketing.apac@hds.com

Hitachi is a registered trademark of Hitachi, Ltd., in the United States and other countries. Hitachi Data Systems is a registered trademark and service mark of Hitachi, Ltd., in the United States and other countries.

All other trademarks, service marks and company names in this document or website are properties of their respective owners.

Notice: This document is for informational purposes only, and does not set forth any warranty, expressed or implied, concerning any equipment or service offered or to be offered by Hitachi Data Systems Corporation.

© Hitachi Data Systems Corporation 2011. All Rights Reserved. DS-212-A DG October 2011