

Hitachi IT Operations Analyzer and Hitachi Adaptable Modular Storage

Using Hitachi Adaptable Modular Storage (AMS) API for communication, Hitachi IT Operations Analyzer makes it easy to monitor the availability and performance of AMS systems from a single dashboard. It provides end-to-end visibility of applications, operating systems, servers, switches and storage devices in the data center, so you can resolve data center challenges quickly and decisively.

Save Time, Lower Costs with End-to-end Visibility

Challenge

In data centers, problems are inevitable. The only questions are: How will you respond, and how quickly? Without end-to-end visibility across applications, operating systems, servers, and both network and storage devices, including AMS systems, you might be forced to “fight fires” on a daily basis. And you might require multiple applications to try to identify the source of the problem.

Solution

IT Operations Analyzer offers a smarter solution. Working with AMS systems, IT Operations Analyzer gives you a complete, end-to-end view of your data center infrastructure. You can quickly identify and eliminate problems wherever they occur, including servers, switches, and both network and storage devices.

By combining IT Operations Analyzer with AMS systems, you can:

- Monitor your entire data center infrastructure through a single pane of glass
- Reduce mean time to diagnose problems within your data center environment with IT Operations Analyzer’s root cause analysis capability
- Be alerted to issues before they become serious problems
- Increase the availability and performance of your AMS system and other infrastructure in the data center

Features

IT Operations Analyzer is specifically designed to work well with Hitachi Adaptable Modular Storage. With its advanced features, IT Operations Analyzer makes it easier to monitor your entire data center infrastructure more efficiently.

Enhanced Visibility into AMS Systems

Unlike many monitoring solutions, IT Operations Analyzer does not require agents or proxies to monitor the availability and performance metrics of

storage systems, servers and switches. IT Operations Analyzer provides agentless monitoring on a broad set of components, using common protocols (WMI, SSH, IPMI, SNMP and SMI-S).

IT Operations Analyzer complements but does not replace AMS storage management tools. In addition, IT Operations Analyzer is easy to set up and install, with quick discovery of AMS systems that shows components, status and performance measurements (see Figure 1).

Root Cause Analysis

The IT Operations Analyzer proprietary root cause analysis engine runs automatically, in the background, constantly looking for any critical events. For your AMS and other assets in the data center, root cause analysis can:

- Reduce mean time to diagnose issues up to 90%.
- Quickly determine the root cause of the real problem using built-in intelligence.

- Automatically perform bottleneck analysis.
- Enable analysis of a large number of event alerts in just a few minutes.
- Provide probability levels as to which devices are creating the issues.

Proactive Alerting

Through proactive alerting, IT Operations Analyzer helps AMS administrators stay ahead of potential problems.

Proactive alerting provides visibility into potential availability and performance issues on AMS and other data center devices. These devices may include servers, IP and Fibre Channel switches, storage and more. Proactive alerts are generated before potential issues upset end users or create outages.

With proactive alerting, you can establish warning thresholds that automatically issue alerts about potential issues, so you can take action to prevent performance bottlenecks and other concerns before they develop into more serious problems.

Insight into Virtual Machines

IT Operations Analyzer offers virtual machine awareness and monitors server connectivity to the storage cloud. Using easily accessible information, administrators can:

- Quickly assess where virtual machines reside.
- Determine whether virtual machines should be migrated or consolidated.
- Identify underutilized hardware.
- View application metrics, operating system metrics in the virtualized environment, chassis metrics and more.
- View connectivity to upstream and downstream components.

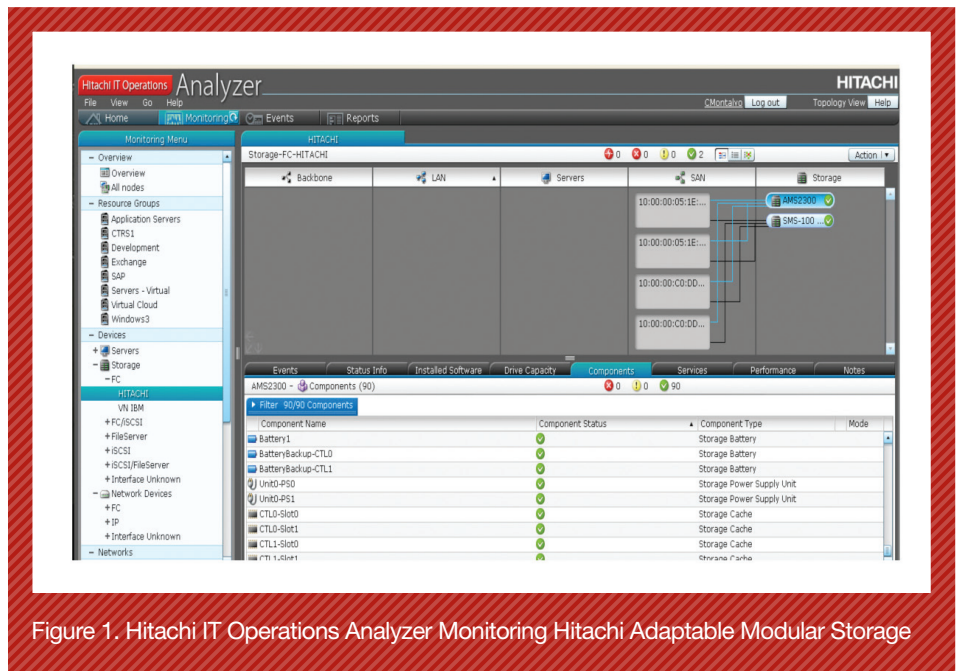


Figure 1. Hitachi IT Operations Analyzer Monitoring Hitachi Adaptable Modular Storage

Combined Performance

The many benefits of combining IT Operations Analyzer with AMS include:

- Holistic view of entire data center, including applications, operating systems, servers, network and storage systems
- Agentless monitoring of devices in the data center, including AMS systems
- Easy setup and installation
- Root cause analysis feature, which delivers up to 90% faster mean time to diagnose
- Proactive alerting, leading to improved uptime and greater customer satisfaction

- Insight into major availability and performance metrics
- Virtual machine awareness and virtual server connectivity

Learn More

To learn more about the integration of Hitachi IT Operations Analyzer with Hitachi Adaptable Modular Storage systems, please visit <http://www.itoperations.com/Partners/Find-a-Technology-Alliance-Partner-Analyzer>.



Hitachi Data Systems

Corporate Headquarters
 750 Central Expressway
 Santa Clara, California 95050-2627 USA
www.HDS.com

Regional Contact Information
Americas: +1 408 970 1000 or info@hds.com
Europe, Middle East and Africa: +44 (0) 1753 618000 or info.emea@hds.com
Asia Pacific: +852 3189 7900 or hds.marketing.apac@hds.com

Hitachi is a registered trademark of Hitachi, Ltd., in the United States and other countries. Hitachi Data Systems is a registered trademark and service mark of Hitachi, Ltd., in the United States and other countries.

All other trademarks, service marks and company names in this document or website are properties of their respective owners.

Notice: This document is for informational purposes only, and does not set forth any warranty, expressed or implied, concerning any equipment or service offered or to be offered by Hitachi Data Systems Corporation.

© Hitachi Data Systems Corporation 2011. All Rights Reserved. DS-211-A DG October 2011