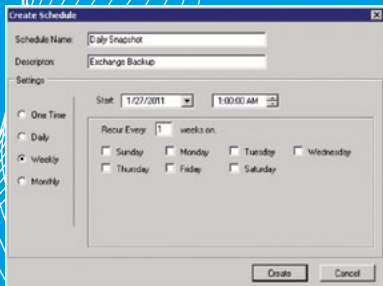


Hitachi Application Protector



Your organization gains easy-to-use, storage-system-based backup, recovery and data protection tools in Hitachi Application Protector software. Empower your administrators to decisively manage and protect critical applications, such as Microsoft Exchange, SQL Server and SharePoint — all from a simple, familiar interface.

Effortless Backup, Recovery and Data Protection for Block and File Application Data

A new generation of Hitachi developed backup, recovery and data protection software is now available from Hitachi Data Systems. Hitachi Application Protector is an easy-to-use application-consistent snapshot software for backup, recovery and protection of critical application environments.

Identifying easier, faster and more reliable ways to complete backup and recovery tasks and support data protection continues to be a major challenge for governments, enterprises and smaller organizations, alike. Shrinking backup windows, massive data growth, and uniqueness and variations of commercial applications, such as Microsoft Exchange Server (MSE), SQL Server and Microsoft Office SharePoint Server (MOSS), increase complexities and data management challenges.

Hitachi Application Protector does not replace existing, more comprehensive, backup and recovery and/or data protection solutions offered today, especially those relying on removable media. Application Protector enhances such data protection tools and provides a simpler disk-to-disk

alternative for environments that do not need advanced capabilities of enterprise-level backup and recovery tools. Additional capabilities, including message- and file-level granularity for Exchange and SharePoint, are provided separately by Kroll Ontrack PowerControls.

Hitachi continues to develop new backup, recovery and data protection tools because a new generation of innovative thinking brings a new way of protecting your data. This protection applies, whether information is block data on Hitachi Adaptable Modular Storage (AMS), Hitachi Virtual Storage Platform (VSP) or the new Hitachi Unified Storage (HUS) systems, or file data on Hitachi NAS Platform (HNAS), powered by BlueArc®.

For NAS Environments: Storage-system-based Snapshots and File Cloning Are the Foundation

Using storage-system-based snapshot technology, backup images can be created quickly and easily. At the same time, with the file cloning ability (via BlueArc JetClone

technology in HNAS), storage space can be used efficiently to maintain changes to the datastores and files. Recovery is further simplified because the backed-up data appears in a user-designated snapshot folder within the Microsoft Windows file system, just like the original. Simply place a mouse over the file needed and “right click” to recover the selected data stores and all related files.

Leverage Native Application Technologies

Hitachi Application Protector was designed from the ground up to use block or file clone technology that leverages Microsoft Volume Shadow Copy Service (VSS) to provide backup, recovery and data protection services that are application consistent; that is, the software understands how and where the primary datastores and supporting files (like log files) are stored on the system.

Application consistency ensures all application-related data changes are being tracked and backed up at the requested point in time so that recovery is guaranteed. HDS developed

the VSS Providers for Hitachi storage systems to support this capability. It is therefore important to use the Microsoft Management Console (MMC) snap-in API for Hitachi Application Protector snapshot management to provide the same user-friendly look and feel that application administrators are used to.

Application Protector enables an expansive capability, via its built-in application protection framework, to provide the same ease-of-use capabilities for additional future applications as well.

Complementary Solutions

Hitachi Application Protector has been designed to be self-service and customer-installable (see Figure 1). However, the Hitachi Data Systems Global Solution Services (GSS) team offers full support for Application Protector with Hitachi NAS Platform, AMS, HUS and VSP systems, and the entire suite of Hitachi storage products. With proven methodology, GSS ensures successful implementations that reduce risk and accelerate time to results.



Figure 1. Screenshot of Hitachi Application Protector Setup Wizard

FEATURE HIGHLIGHTS AND SUMMARY

Fast and Easy to Use

- Storage-system-based snapshots can be taken 1 per second, up to 16 million snapshots.
- Recovery is simply a “right click” of a mouse.
- Software is customer-installable.

Installation and Setup Wizard Provided

- Wizard helps manage the installation of Hitachi Application Protector.

Alternative to Removable-media-based Backup

- Ideal for disk-to-disk backup without 3rd-party software or NDMP configuration issues
- Storage-system-based technology that ensures space efficiency for all backup files
- Application consistency, critical to restore at required point in time (PIT)
- Protection at the snapshot level, but recovery at the individual file level
- Elimination of application strain during backups
- Reduced backup window, improved recovery time objective (RTO)

Microsoft Windows Server Configurations

- Windows 2003 R2 SP2 (32 and 64 bit)
- Windows 2008 R2 (64 bit)
- 64-bit, 1.5GHz CPU minimum (dual core recommended)
- 2GB main memory
- 5MB minimum free disk space
- Gigabit Ethernet recommended

Application Environments Supported with MMC Snap-ins

- Microsoft Exchange (versions 2007 and 2010)
- Microsoft SQL Server (2005 and 2008)
- Microsoft SharePoint Server (2007 and 2010)
- Oracle 10g/11G

Hitachi NAS Platform Application Protector Enablement Kit

- VSS Provider
- iSCSI protocol module
- HNAS file cloning ability (via BlueArc JetClone)



Hitachi Data Systems

Corporate Headquarters

750 Central Expressway
 Santa Clara, California 95050-2627 USA
www.hds.com

Regional Contact Information

Americas: +1 408 970 1000 or info@hds.com
Europe, Middle East and Africa: +44 (0) 1753 618000 or info.emea@hds.com
Asia Pacific: +852 3189 7900 or hds.marketing.apac@hds.com

Hitachi is a registered trademark of Hitachi, Ltd., in the United States and other countries. Hitachi Data Systems is a registered trademark and service mark of Hitachi, Ltd., in the United States and other countries. BlueArc is a registered trademark of Hitachi Data Systems in the United States and other countries.

All other trademarks, service marks and company names in this document or website are properties of their respective owners.

Notice: This document is for informational purposes only, and does not set forth any warranty, expressed or implied, concerning any equipment or service offered or to be offered by Hitachi Data Systems Corporation.

© Hitachi Data Systems Corporation 2012. All Rights Reserved. DS-187-C VA April 2012